

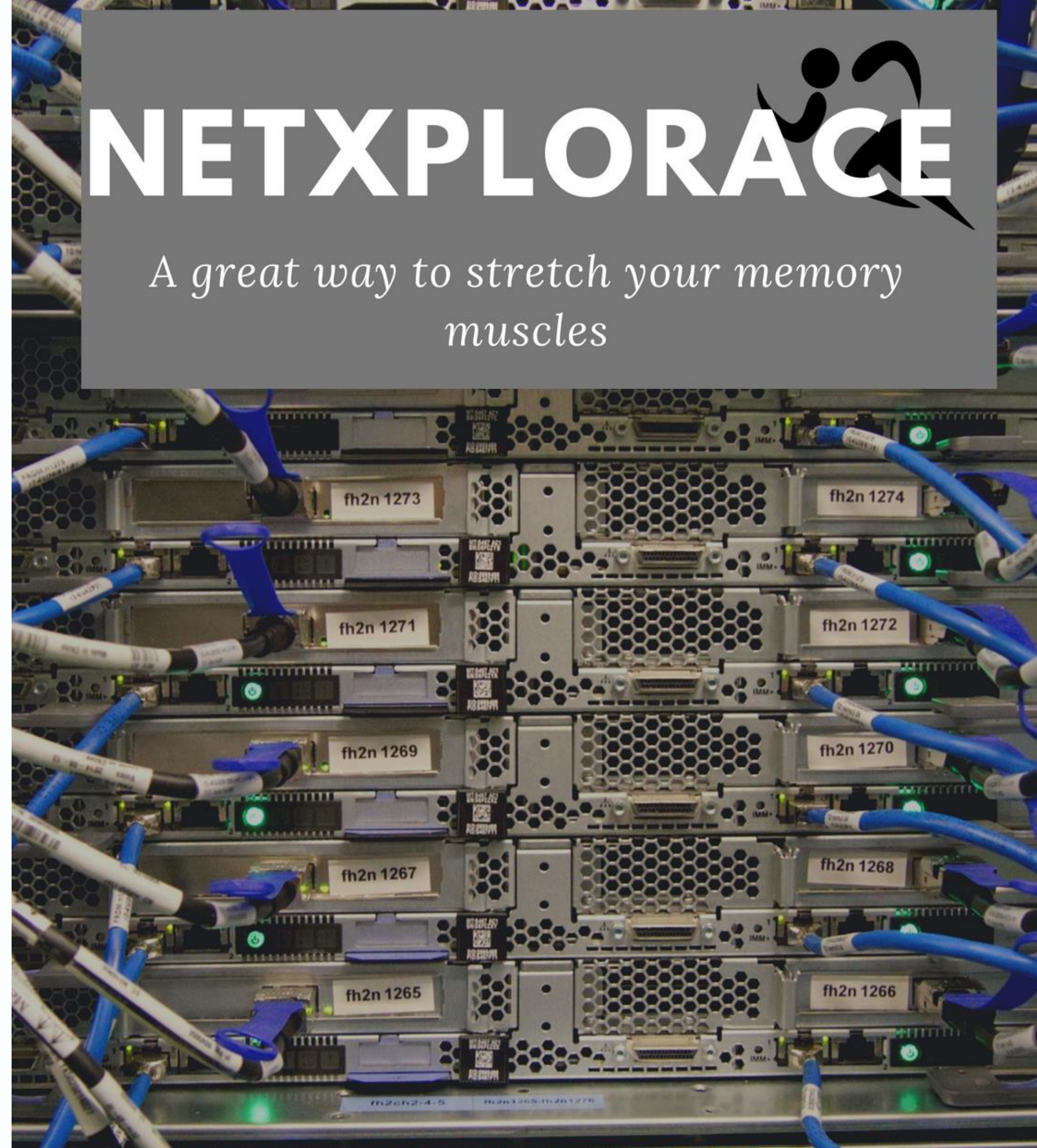
NETXPLOPACE

*A great way to stretch your memory
muscles*

NetXplorace: An Introduction

A stab at competition-based
activity for soft skill assessment in
Computer Network class

Hazinah Kutty Mammi
CS, SC, FE UTM





NetXplorace: BTS *Behind the scenes

For assessment of soft skills

This is the platform used to assess soft skills, which are TW (Team Working) and TH (Thinking).

A fun way/experience

Computer Networks (CompNet) is a theory and lab heavy course. It can get repetitive pretty quick.

Repetitive = boring.

NetXplorace was designed to put the fun into learning as well as nurture skills.

NetXplorace: History

Earlier

- Many class competition
- But :: time was limited, excitement was limited, results were limited.

Goal

- bring the competition out of class
- give students room to be active
- let them have fun, blow off a little steam



NetXplorace: Let's do it

01

The PLAN

What do you want to achieve?

What should the students do to get marks?

What are the different activities to be included?

The teams, the routes, the questions, the clues, the venues, the help....

02

The Process

Getting the plan done!

THE PLAN

Designing the puzzle that is NetXplorace



NETXPLOPACE 2019

A great way to stretch your memory muscles

THIS STOP: ROUTER

The teams

- Teams are made of 3 members.
- Student choose own team members.
- Team is also lab team - so they are together all through the semester.
- TW starts from teams are formed - they have to work together to ensure members have knowledge and skills.
- Knowing number of members and groups - help in route, stops and questions design

**Roughly, we have
about 25-32 groups**

The questions

- Aim: all members MUST answer.
- Question types: **Individual, Double, Group**.
- Individual: Only one member should answer – not the same member every time
- Double: Two members
- Group: Answer together
- Randomly put easy – medium – hard questions

Students do not know what question will be asked - they only know its type.



Make sure:

- Everyone has time to shine
- Not only 'the smart' answer everything
- There is enough time for all questions

The venue/stops

- A stop is where student stop to answer question.
- Try to get a good place - cool, covered, with doors (especially for individual questions).
- It also needs to be dispersed enough that 'running' is valid.
- Also, need to check availability.
- 32 groups : 5 questions - need at least 6/7 stops (including begin and end)

**Think of the
volunteers.**

The volunteers

- These were essentially lecturers, but has evolved into students.
- Seniors, juniors volunteer to help to man the stops and such.
- The more, the better.

**An
unexpected
outcome**

The routes

- Routes need to be carefully planned.
- Avoid: road block, clogging, stress.
- 32 groups : 5 questions - need at least 3 or 4 different routes

**Some math
is required**

The clues

- The clues are used to go to the next stop.
- It contain 2 things: **The Next Stop** and **The Question Type**
- This is a fun exercise in puzzle solving – you can use many different types

**Popular
trends, funny
stuff, etc...**

The rules

- No calculators/phones when answering questions.
- Phones may be used to solved clues.
- No cheating (of any kind)

**“I follow three rules:
Do the right thing, do
the best you can, and
always show people
you care.” Lou Holtz**

The help

- Students will get stuck answering questions: they are stressed, unprepared, etc.
- Help is provided with penalties.
 - After 15 mins of trying, they can call ONE member in to help, but get 20 mins penalty.
 - After 15 mins of trying together, they can get help from the evaluator, but get another 20 mins penalty.

***Penalties means less marks received - ouch!**



Keep tabs on:

- Who answers what
- Team in right route
- Which stop is next
- Time arrived/left
- Penalties

PROBLEMS

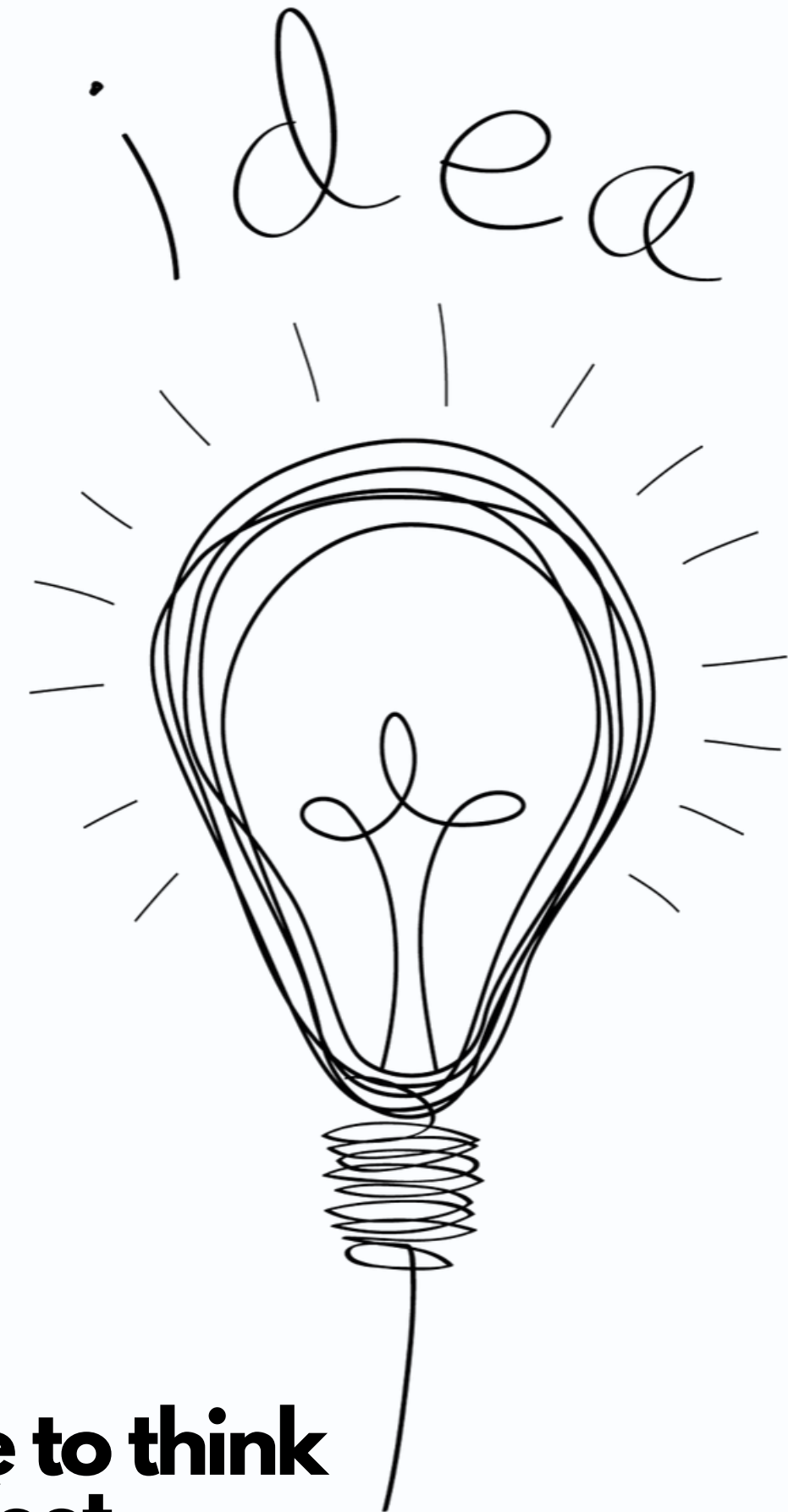
Volunteers missing instructions - student submit and leave.

Volunteers misunderstood questions - panicked on answers.

Junior volunteers intimidated by senior participants.

Students just crash a stop that is not theirs.

Timing, timing, timing...



**You have to think
on your feet**

	STOP VENUE	STOP Q	STOP REQ.	print	PIC		BLUE LINE		clue	GREEN LINE		clue	
ER	CICT	XWORD	A	y	HAIKAL(K), HANA	Y	1	CICT	begin	6	CCNA LAB	done	
CH	BK5	STATIC ROUTE	I	y	JI WEN (K)	Y	2	BK5	done	1	CICT		
B	MPK1	QUIZ	D	y	SHAFIN(K), MAHFUZ, TAMEEM	Y	3	MPK1	done	2	BK5		
E	BILIK SEMINAR N24	SUBNET	I	y	YY(K), SHUPING	Y	4	BILIK SEMINAR N24	done	3	MPK1		
COL	B.TUTORIAL 5 N28A	ACL	I	y	MIKI(K), ALIFF	y	5	B.TUTORIAL 5 N28A	done	4	BILIK SEMINAR N24		
											B.TUTOR		

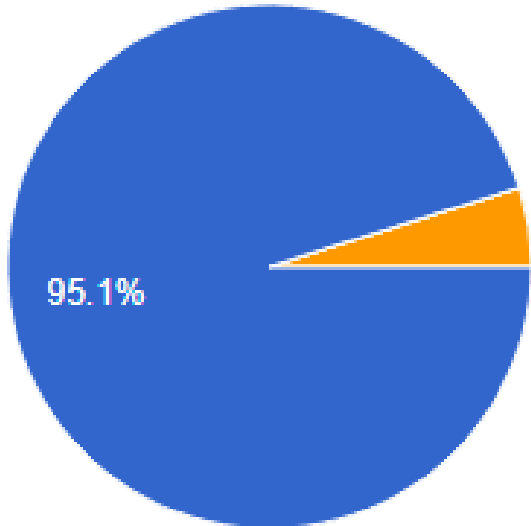
HOW TO MANAGE EVERYTHING

MAP OF THE RACE excel file

FEEDBACK

Do you think NetXplorace is a good event

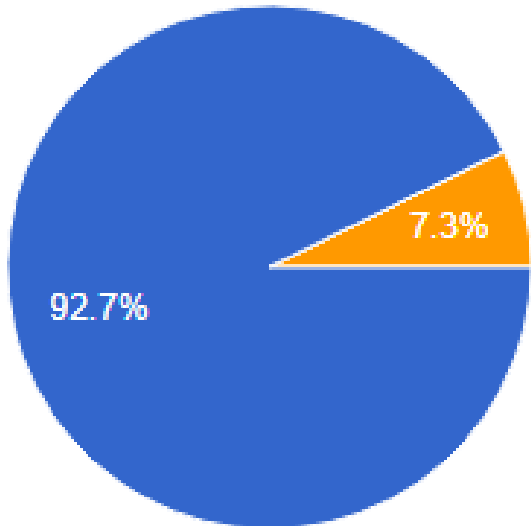
41 responses



- Yes
- No
- Maybe

Do you think it should be repeated for your juniors?

41 responses



- Yes
- No
- Maybe

GALLERY



QUESTIONS? COMMENTS?

If you need help organizing an explorace for your class, contact me.

