

# June Events



## Fleece Fair

Hatch Beauchap Village Hall,  
Taunton, Somerset

**17 June**

Explore a wide variety of newly-shorn sheep and alpaca fleeces produced from local herds, as well as exclusive natural yarns. Members of the Somerset Guild of Weavers, Spinners and Dyers will be on hand to help visitors find the perfect variety and colour, so they take home their ideal fleece at the end of the day.

[www.somersetguildwsd.org.uk](http://www.somersetguildwsd.org.uk)

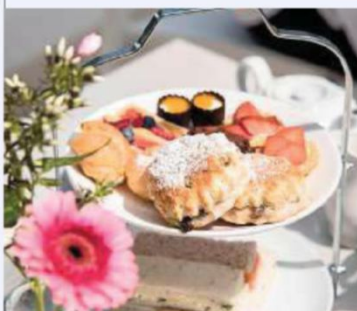
## House and Garden Festival

Olympia London, Kensington

**21-24 June**

The ultimate celebration of summer and stylish living, this festival brings together 550 garden, interior and lifestyle brands to suit any style. Be inspired while exploring the grounds, and shop among the extensive mix of independent boutiques and products for sale, selected by an expert team.

[www.houseandgardenfestival.com](http://www.houseandgardenfestival.com)



## Woolfest

Mitchells Lakeland Livestock  
Centre, Cockermouth, Cumbria

**23-24 June**

Be inspired by the best of British wool and wool crafts, and learn all about rare native breeds, while participating in creative projects. This event is all about embracing the quality, colours and skilled craftsmanship of wool. The event is a treasure trove of natural fibres.

[www.woolfest.co.uk](http://www.woolfest.co.uk)

## Earth & Fire Ceramic Fair

The Harley Gallery, Welbeck,  
Nottinghamshire

**23-25 June**

Every year, this international ceramic fair attracts enthusiasts from all over the UK and Europe. Enjoy taking part in demonstrations, while interacting with hundreds of potters. Browse through the abundance of items on display, including garden planters and sculptures, bowls, pie dishes, teapots, mugs, plates and egg cups.

[www.earthandfireceramicfair.co.uk](http://www.earthandfireceramicfair.co.uk)



15 16 17 18 19 20 21 22 23 24 25 26 27 28 29 30



## West Woodhay Gardeners' Fair

West Woodhay House,  
Newbury, Berkshire

**23-25 June**

Visit this garden fair to explore the elegant private gardens and country estate of this magnificent house. Take a look at an extensive range of plants and gardening products that have been selected at the highest quality, along with hand-made garden furniture and bespoke gates. All profits from the event will go to charity.

[www.westwoodhayfair.co.uk](http://www.westwoodhayfair.co.uk)

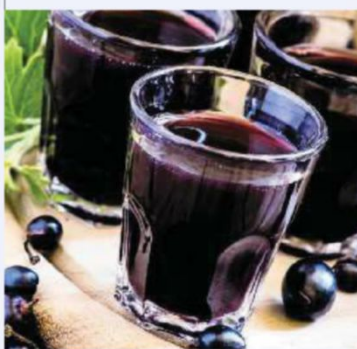
## Cordial Making Course

The Sustainability Centre,  
East Meon, Hampshire

**24 June**

Learn to identify and forage tasty ingredients from local hedgerows, then move into the kitchen to turn them into syrup. Understand what ingredients work best in soft drinks. Leave at the end of the day with a bottle of home-made cordial.

[www.sustainability-centre.org/courses](http://www.sustainability-centre.org/courses)



## Rose Fair

Peckover House, Wisbech,  
Cambridgeshire

**28 June**

Gardeners will be on hand to answer questions on growing, cultivating and caring for favourite roses throughout the afternoons during the week. The elegant Georgian town house and formal gardens in North Brink will also be open to visitors during Wisbech Rose Fair.

[www.nationaltrust.org.uk/peckover-house-and-garden](http://www.nationaltrust.org.uk/peckover-house-and-garden)

## Nunney Open Gardens Day

Nunney, Frome, Somerset

**30 June**

A village with an exceptional interest in gardening, Nunney is opening 20 gardens to the public. View the collection of vibrant gardens that the village has produced over the year. Light refreshments will be available in the village hall, while plants and produce can be bought at a market place.

[www.visitnunney.com/open-gardens-day](http://www.visitnunney.com/open-gardens-day)



*LandScope makes every effort to ensure all details are correct but recommends details are confirmed before travelling.*

Photography: Shutterstock; Alamy