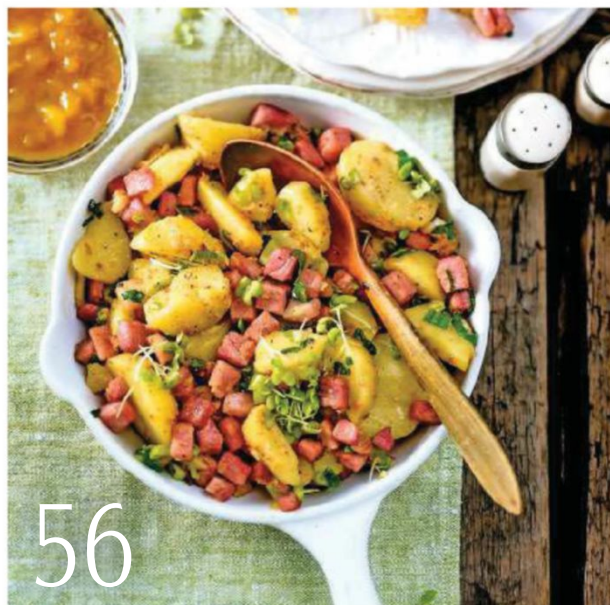


Contents

May / June 2017



56



42



34

In the garden

- 10** A medieval garden and park
- 20** Rainbow-coloured bearded iris
- 26** The garden in... May and June
- 30** A miniature bog garden
- 42** Family dedicated to herbs

In the kitchen

- 51** The richness of butter
- 56** Delicious ham in the pink
- 60** Dark and juicy blueberries
- 66** Regional & Seasonal:
Shibden Mill Inn

Craft

- 34** Spicy-scented sweet Williams
- 86** A knotted doorstep bag
- 90** Flowerheads spun in steel