

that can be accessed globally through the Internet. An ETD is the same as the original paper document that has been approved by the panel of examiners and Senate.

5.3 Preparation Process

A thesis that has been examined and approved by Examination Board of Graduate Studies (Senate Sub-Committee) (JKTS(PS)) and Senate should be converted into digital form and submitted to the School of Graduate Studies (SPS). SPS will then forward both ETD and bound thesis to the Library for archive and access. Flow chart of the preparation process is shown in Figure 5.1.

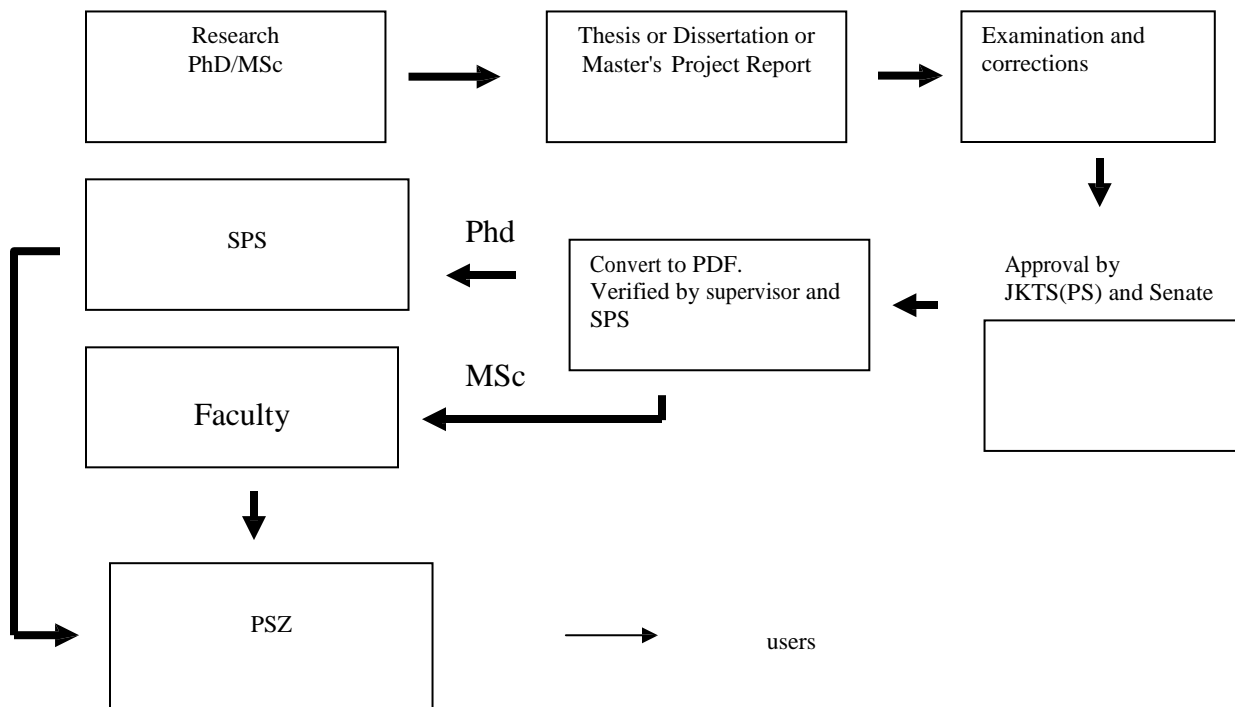


Figure 5.1: Preparation process of ETD