

### 2.9.10 Elevation

When included in planning presentations, conventional architectural elevations are a very effective way of explaining existing or intended streetscape. They can show scale, character, materials and detailing, especially that of a terrace, cluster or group of buildings in their context. Hand-drawn elevations traced over a scale base are a common form of presentation, conveying a softer, more informal feel.



**What it shows:**

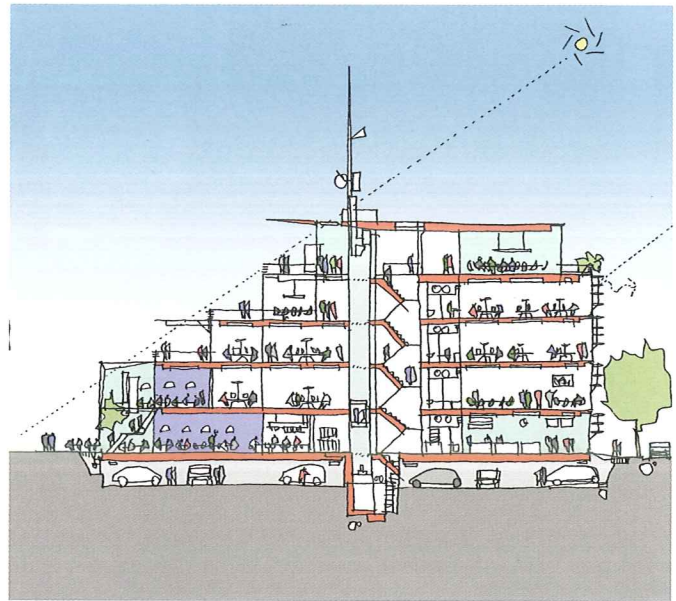
- key elements of design
- relative scale and massing
- intended character
- heights and proportions.

**Why it is good graphically:**

- shadows emphasise modelling of building
- minimal colour palette used
- glazing distinguished from other materials
- presents realistic proportions and relationships.

### 2.9.11 Section

Illustrative sections through buildings and spaces, especially when they include a variety of uses arranged vertically, help explain the relationship between these uses in context. They can explain how internal spaces spill out into the public realm, how the profile of a building responds to its setting or the flexibility to change uses over time. Even a simple sketch section can help explain the complexities of levels, especially on a sloping site or when levels are split.



**What it shows:**

- vertical stacking of uses
- relationship of building(s) to public realm
- building heights and proportions
- roof profiles and skylines.

**Why it is good graphically:**

- contrasting colours to emphasise different elements
- presents realistic proportions and relationships
- people and cars included to give instant sense of scale.