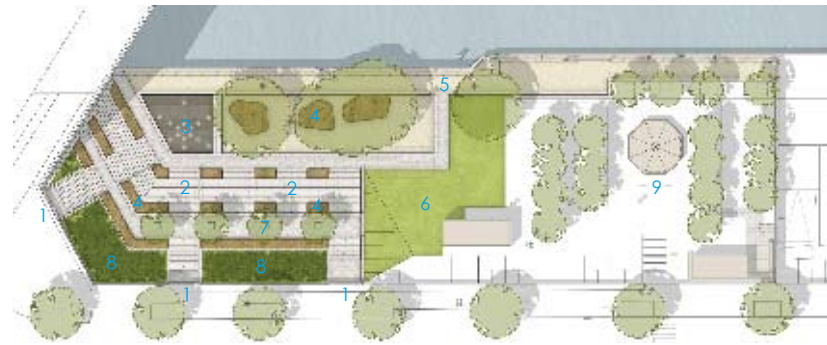


Sonnenbrücke Nord

Location: Berlin, Germany **Designer:** Henningsen Landschaftsarchitekten BDLA Berlin **Photographer:** Christo Libuda **Completion date:** 2010 **Site area:** 1,300 sqm



1. Entrance
2. Granite Stair Complex
3. Fountain Covered with Slates
4. Wooden Decks
5. Waterfront Promenade
6. Lawn Slope
7. Apple Trees
8. Lavender and Roses
9. Beer Garden

In the context of the German urban development programme "Stadtumbau West", the area beside the bridge "Sonnenbrücke" in Berlin-Neuköln was turned over to the public after one year construction period as a new attractive plaza with fountain and an open stair complex at the waterfront.

Henningsen Landscape Architects planned these previously run-down waterside area as an urban public open space for residents and visitors. Beside the waterfront, the grand scaled stair complex made of light grey Portuguese granite stone with its numerous wooden decks invites the visitors to stay and relax. The wide staircase resolves and stages the huge level difference between the street and water channel.

Some extant robinia trees, a row of apple trees at the stair head as well as lavender and roses planted at the slopes frame the otherwise stony setting of the stair complex. In addition to the nearby water channel, the topic "water" can also be found at the plaza as a water play, which is installed even to the ground in a covering of dark grey German slates.

Close to the water play lies a big open sand surface, which can serve the neighbouring beer garden with beach chairs and deck chairs as comfortable living zone. Light orchestrations of the water play and the wooden decks with built-in lights as well as light-bands underneath the hand rails and stairs set a course during the evening hours.

Right: Water feature

