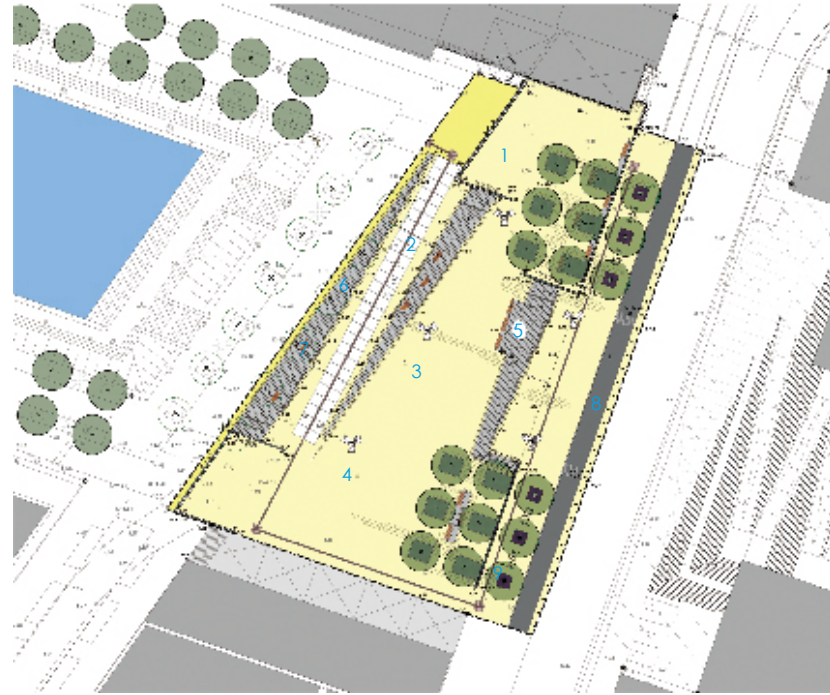


Wasserplatz Kiel

Location: Kiel, Germany **Designer:** BHF-Landscape Architects **Photographer:** BHF-Landscape Architects **Completion date:** 2008 **Site area:** 3,500 sqm



1. Square North
2. Barrier-free Way
3. Square Centre
4. Square South
5. Sculpture
6. Steps
7. Seating Element
8. Bicycle Way
9. Bicycle Stand

The waterside square is a new development at the "Germaniahafen". This square is directly adjacent to the "Norwegen-Terminal" on the east side of the "Kieler Förde", and forms, together with the 3-segment bascule bridge over the "Hörn", an important connection between the city, with the main station on the west side, and the district "Kiel Gaarden" on the east side. The square negotiates a height difference of approx 6 metres and connects the promenade with "Gaardener Ring" and the following pedestrian bridge over the "Ostring", a heavily frequented main road in Kiel.

A generously designed stepway, with two flights and an integrated slow-rising ramp, enable pedestrians to negotiate this height difference. The "lower deck" offers opportunities to sit, the open-air gastronomy and freenet-centre offer time to linger. "Seefarers" can watch the bright life of the harbour in the shade of trees. The sculpture "Adam and Eve" by Björn Norgaard stands in the centre of the square.



Upper right: View to the historical fishing boats in the Germaniahafen
Lower right: City life on two levels

