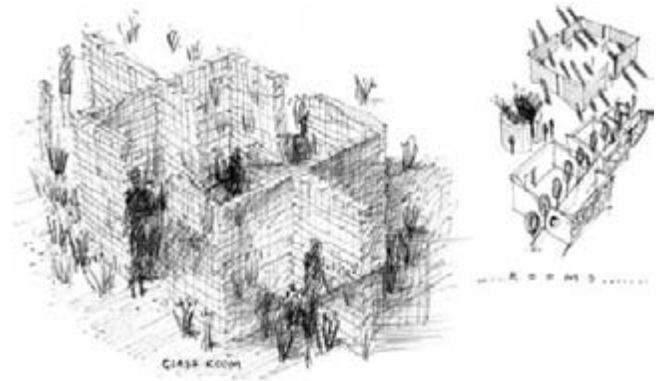


Built spaces



Structures, like vegetation and landform, play an important role in defining and enclosing spaces, particularly in urban contexts. Urban space is often partially or fully enclosed by buildings. Landscape architects work with structures in two main ways. They respond to or work with architects and urban designers to create positive building–landscape relationships and they also independently design free standing structures to enclose space. The designer considers materials and form in relation to context, function and visual intent when creating structures to define space.

Urban design, which may involve the work of landscape architects, is only briefly explored here by considering some characteristics and functions of two important urban space types: squares and courtyards. Streets are briefly considered in the section on Paths (see p. 106).