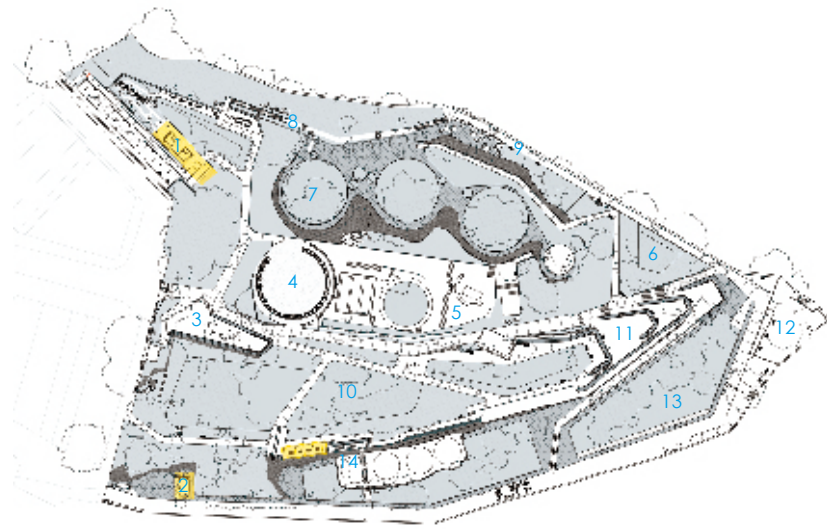


Ballast Point Park

Location: Sydney, Australia **Designer:** McGregor Coxall **Photographer:** Christian Borchert, Landscape Solutions **Completion date:** 2009 **Site area:** 25,000 sqm



1. Wharf Road Amenities
2. Yeend Street Amenities
3. Belvedere
4. Tank 101
5. Menevia
6. Amphi Theatre
7. Grass Rings
8. Grass Ring Bund Wall Stair
9. Walkway below Grass Rings
10. Grasslands on Ridge
11. Ridge Terraces
12. The Point
13. Lower Grass Terraces
14. Grasslands Bund Wall Stair

Award description:

2010 International Waterfront Design Honour Award
 2010 NSW National Trust Heritage Awards
 2009 Australian Institute of Landscape Architects NSW Award
 2009 BPN National Sustainability Award – Landscape Design
 2009 Landscape Contractors Association Awards of Excellence

The design uses world leading sustainability principles to minimise the project's carbon footprint and ecologically rehabilitate the site. The design reconciles the layers of history with forward looking new technologies to create a regionally significant urban park. The environmental approach is further underpinned by site-wide stormwater biofiltration, recycled materials, and wind turbines for on-site energy production.

This design brings to life the principles established in the original master plan where there is a fine balance between what is removed and what is retained. The end product is a park that proudly communicates all the site's past layers and human interventions in both, an innovative and informative manner.

The design challenges our perception of materials and their use. Dominant new terrace walls sit atop the sandstone cliffs but these walls are not made of precious sandstone excavated from another site, rather from the rubble of our past. What once was called rubbish is now called beautiful. It is the new ballast. But it is more than this at play: it is the total composition of these recycled rubber filled cages, off set with concrete coping panels topped with fine grain railing, that allow these walls to sit confidently at the portal to the inner harbour.

8 vertical axis wind turbines and an extract from a Les Murray poem, carved into recycled tank panels, forms a sculptural re-interpretation of the site's former largest storage tank. The wind turbines symbolise the future, a step away from our fossil fuelled past towards more sustainable renewable energy forms.



Right: The Point

