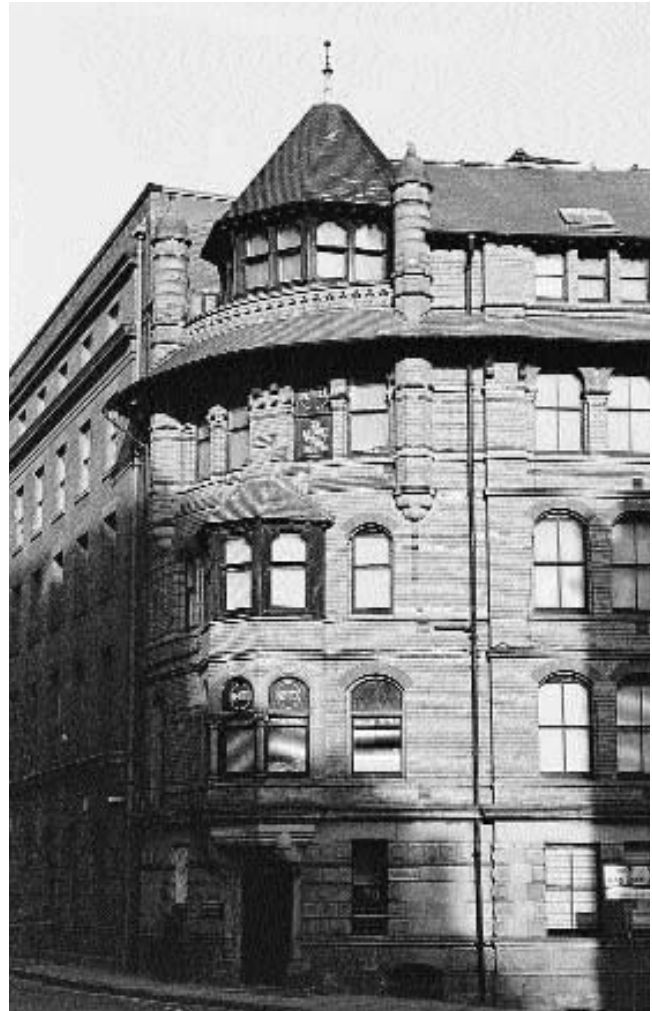




4.2

Figure 4.2 Stoney Street, The Lace Market, Nottingham.



4.3

Figure 4.3 Stoney Street, The Lace Market, Nottingham.

of the finest collections of nineteenth-century commercial architecture possibly in Europe (Figures 4.2 to 4.5). In the twentieth century, the lace industry went into decline. Many of the fine buildings were not properly maintained, became run down and were sub divided as workrooms for small clothing

and textile firms. The rents such properties could command were low, so exacerbating the problems of maintenance. Following the destruction of some buildings during the Second World War, further buildings were demolished in the 1950s and 1960s. The road schemes in The Lace Market and its