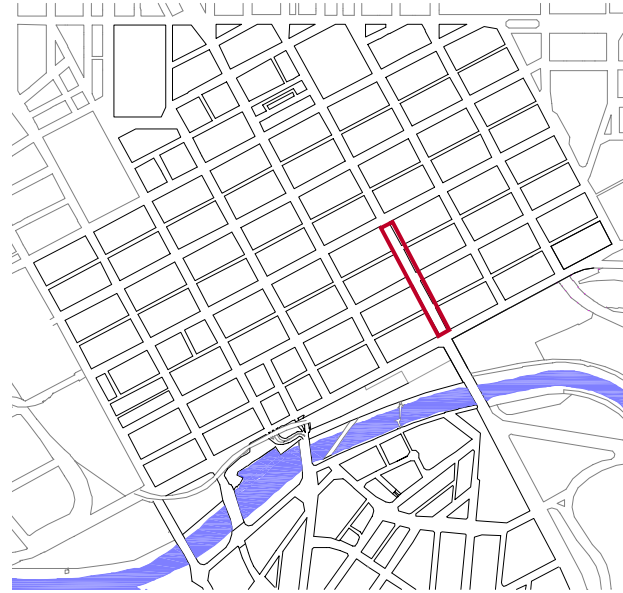
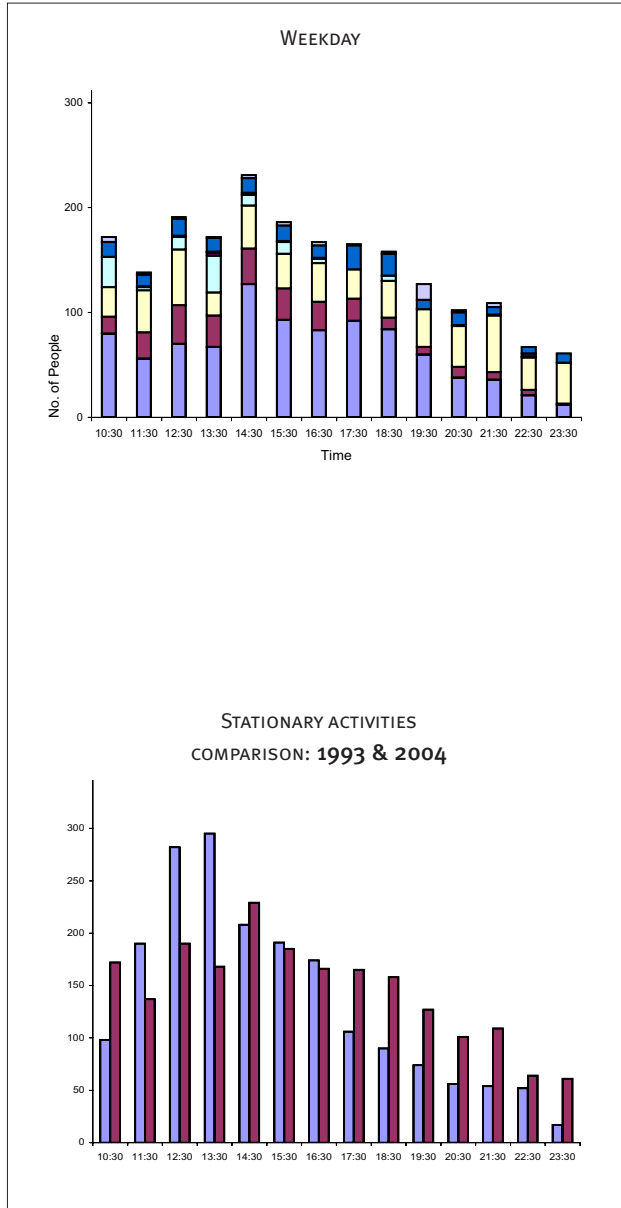


# 3.3 STATIONARY ACTIVITIES - SWANSTON STREET (SOUTH)



**Counts:**  
 Weekdays: 11/11 + 25/11 + 2/12 2004 : 10am-12am  
 Saturday: 27/11/2004 : 10am-12am  
 Weather: Fine at all times

- cultural activities
- commercial activities
- children playing
- lying down
- secondary seating
- sitting at cafe
- primary seating
- standing

This section of Swanston Street has seen a decline in the number of cafe seats due to issues associated with kerbside cafe management. However, a quite impressive activity level has been upheld, especially on Saturday evenings. But overall, there is 20 per cent less stationary activity occurring on weekdays and Saturdays compared to 1993. Over the past decade, there has been a general shift of activities to later in the day, from the morning to mainly in the afternoon and evening.

