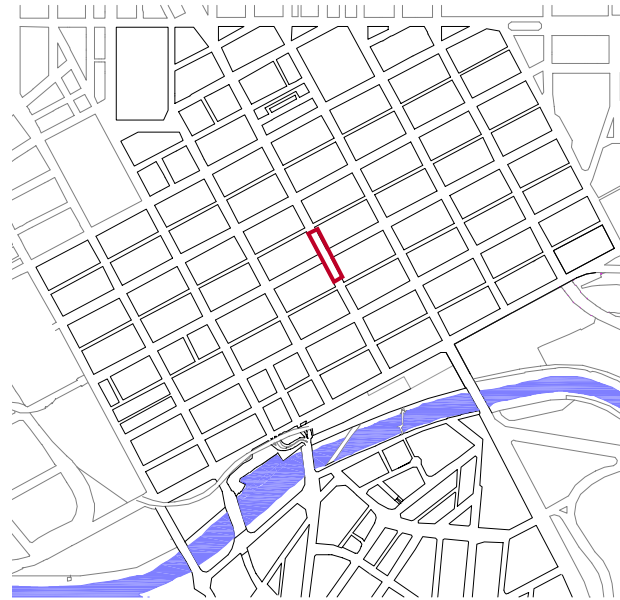
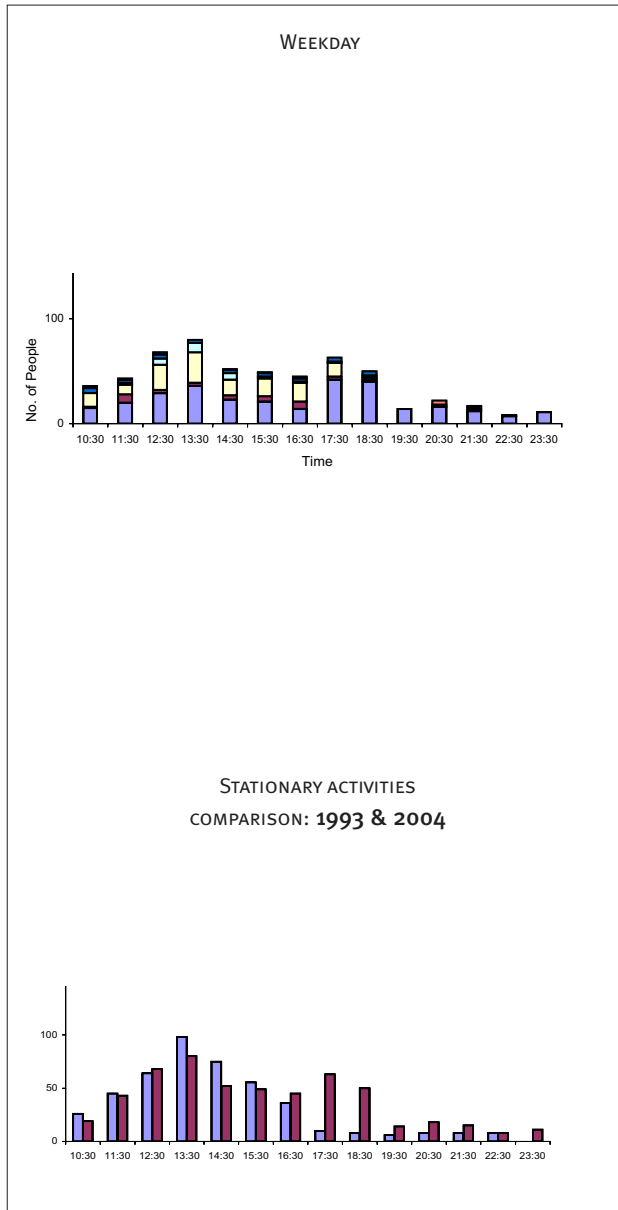


# 3.3 STATIONARY ACTIVITIES - ELIZABETH STREET



- Counts:**  
 Weekdays: 11/11 + 25/11 2004 : 10am-12 midnight  
 Saturday: 27/11/2004 : 10am-12 midnight  
 Weather: Fine at all times
- cultural activities
  - commercial activities
  - children playing
  - lying down
  - secondary seating
  - sitting at cafe
  - primary seating
  - standing
- 1993  
 ■ 2004

The stationary activities recorded in Elizabeth Street reveal a low level of public life during the week and Saturdays. This is symptomatic of there being fewer attractions than other survey sites, but can also be attributed to construction works affecting the results.

Over the past decade, the activity levels in Elizabeth Street have not significantly changed, with low levels also recorded in 1993. However the growth in pedestrian numbers points to the potential for a much more attractive and vibrant place in the future, if a better quality streetscape is offered.

