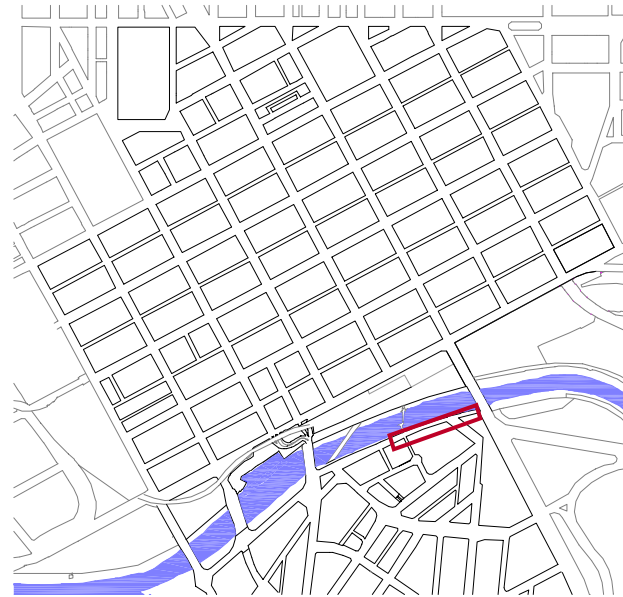
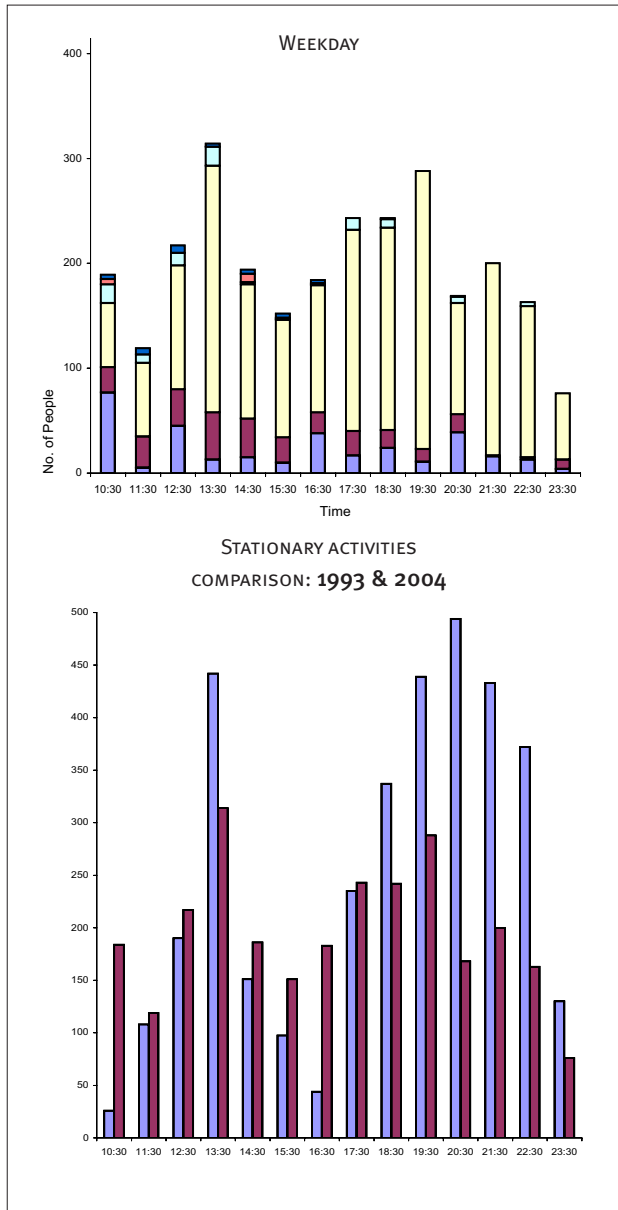


3.3 STATIONARY ACTIVITIES - SOUTHGATE



- Counts:**
 Weekday: 11/11 + 25/11 2004 : 10am-12 midnight
 Saturday: 27/11 + 4/12 2004 : 10am-12 midnight
 Weather: Fine at all times
- cultural activities
 - commercial activities
 - children playing
 - lying down
 - secondary seating
 - sitting at cafe
 - primary seating
 - standing
- 1993
 ■ 2004

In 1993, Southgate was newly established and so one of the only attractions offered along the Yarra River. By 2004, a great many new destinations have been added: Federation Square, Casino Entertainment Complex, Exhibition Centre, Melbourne Aquarium and Birrarung Marr. As could be expected against this new competition, Southgate has somewhat fewer visitors on weekdays, especially at lunchtime and in the evenings compared to 1993. The Saturday pattern resembles the 1993 patterns more closely, but shows more evening visitors than 10 years ago. For anytime of the day or week, people in cafes is the dominant stationary activity.

