

Figure 4.36 Fall zone for single-axis swings detail.

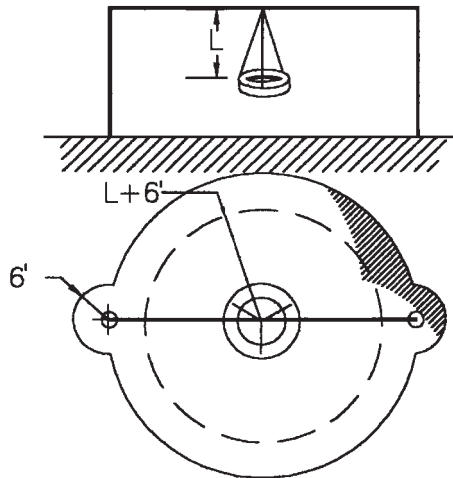


Figure 4.37 Fall zone for multiple-axis swings detail.

provide adequate room. In other communities cyclists take to the streets and share the way with automobiles. The Bicycle Institute of America has developed the Bicycle Friendly Communities program to encourage the creation and maintenance of bicycle routes (see Table 4.15).

Bicycle routes require much the same level of planning and care as street design. Improper planning and installation can result in poor surface conditions and unsafe design. As with streets, an estimate of traffic volume is necessary.