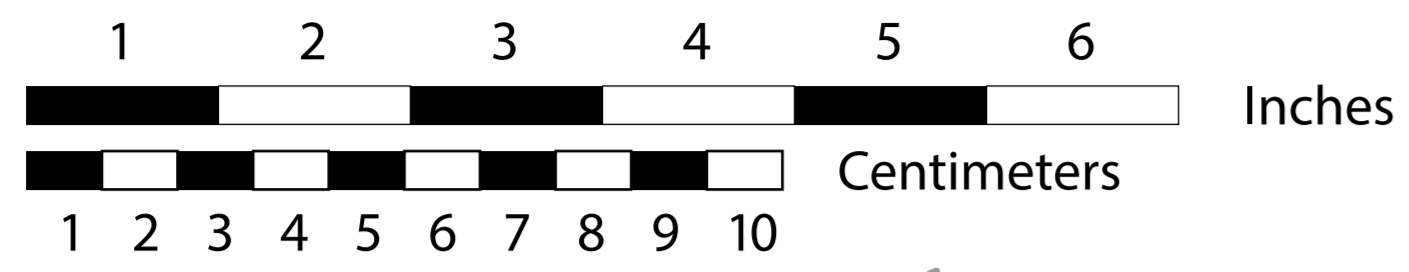
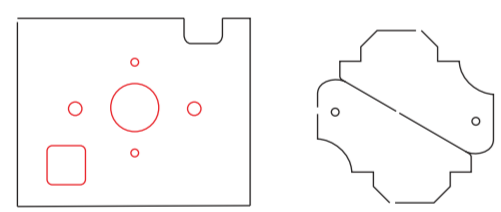
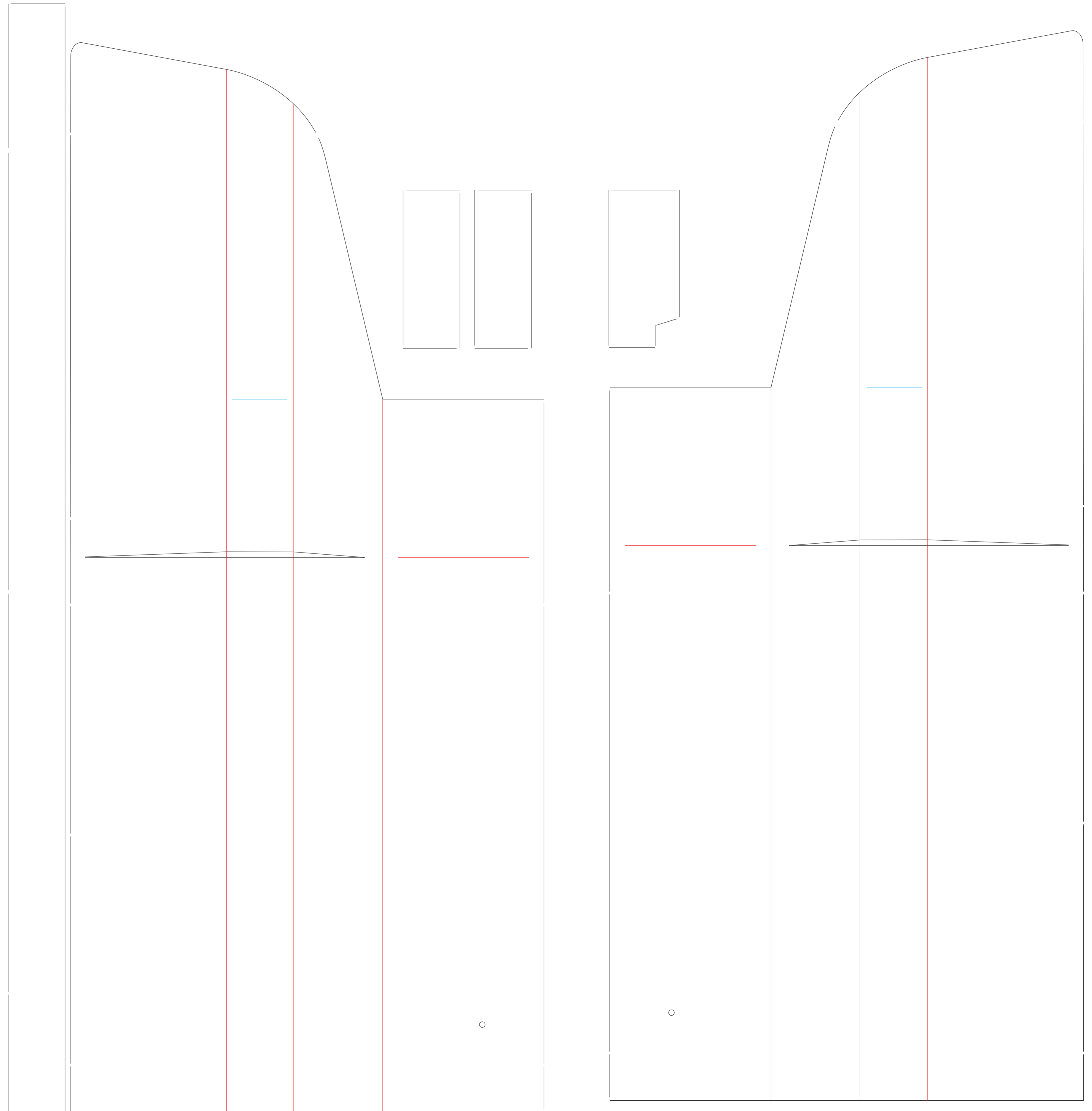
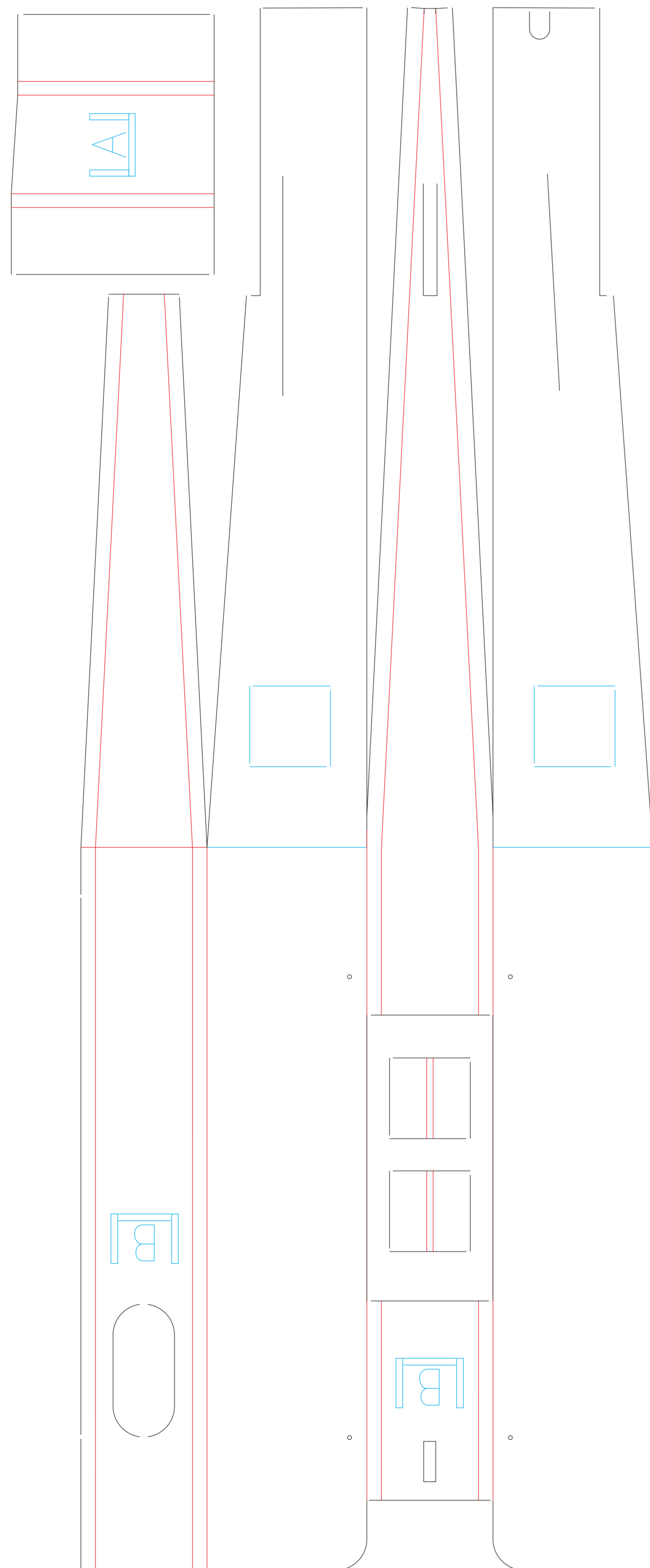
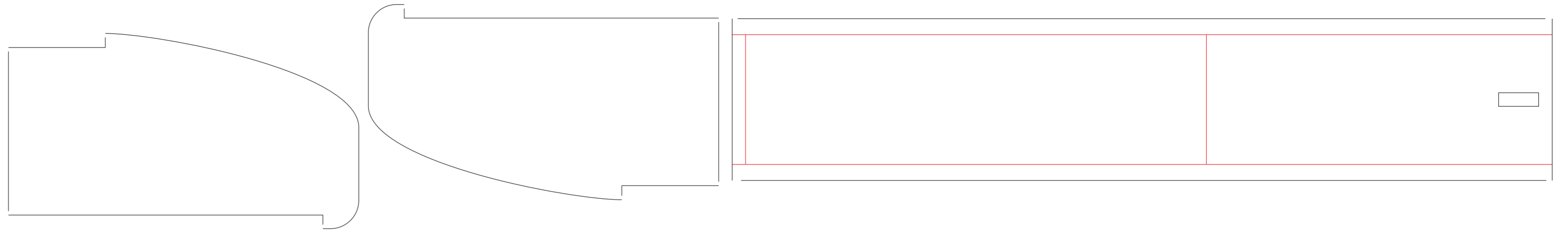
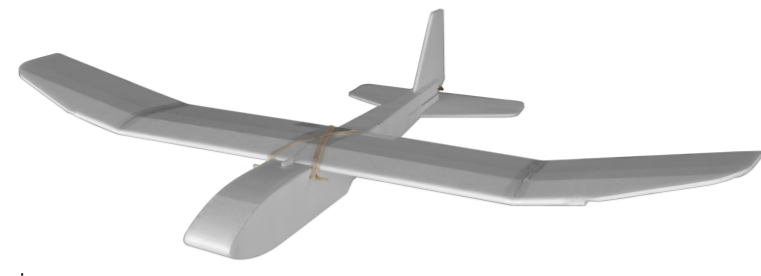


# FT Tiny Trainer



black = cut  
red = score 50%  
blue = lightly crease



Firewall/Control horns  
1/16" Inch thick  
(1.5mm)  
Hobby Plywood

Recommended electronics:  
2200 kv 250 size motor (minimum)  
12 amp ESC minimum  
500 - 1000 mAH 3s  
(2-4) 5 gram servos

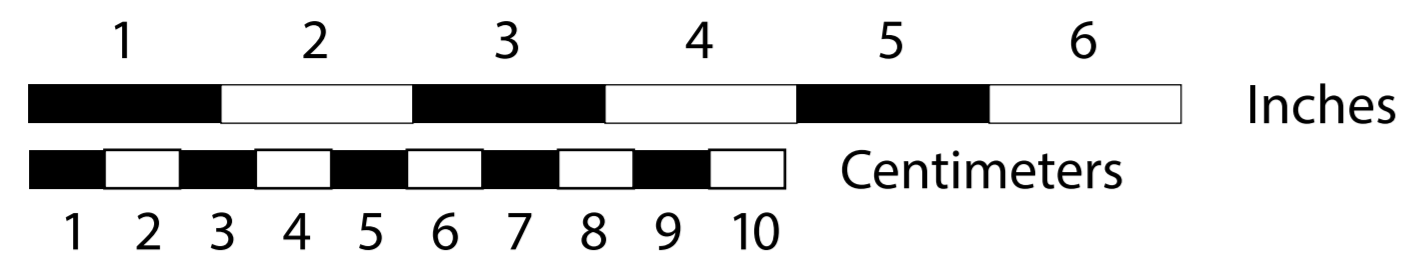
Throws:  
16° deflection  
Expo 30%

Weight Without Battery:  
6.9 oz (193 g)

Recommended Prop:  
5 x 3 minimum



# FT Tiny Trainer



black = cut

red = score 50%

blue = lightly crease

