



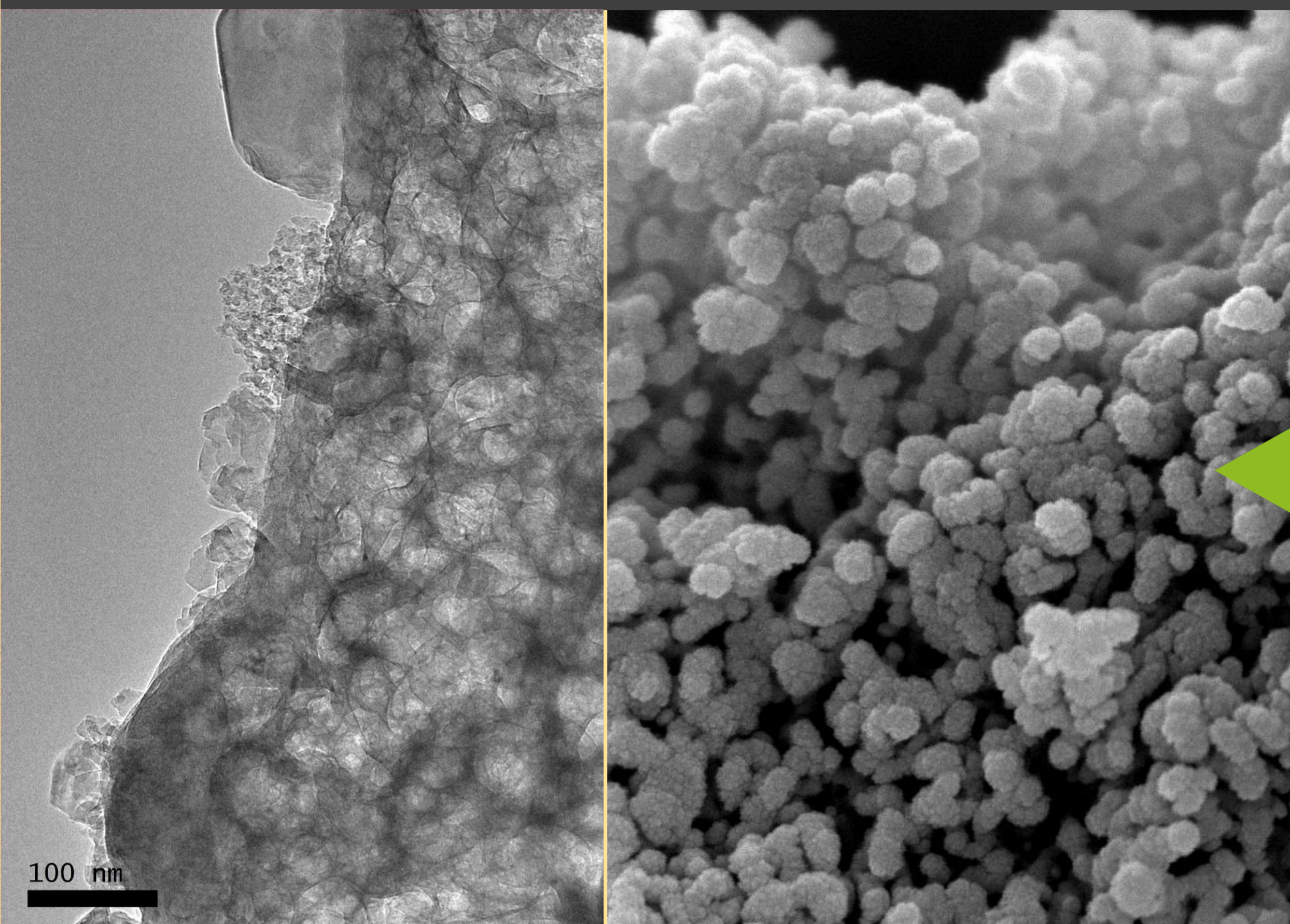
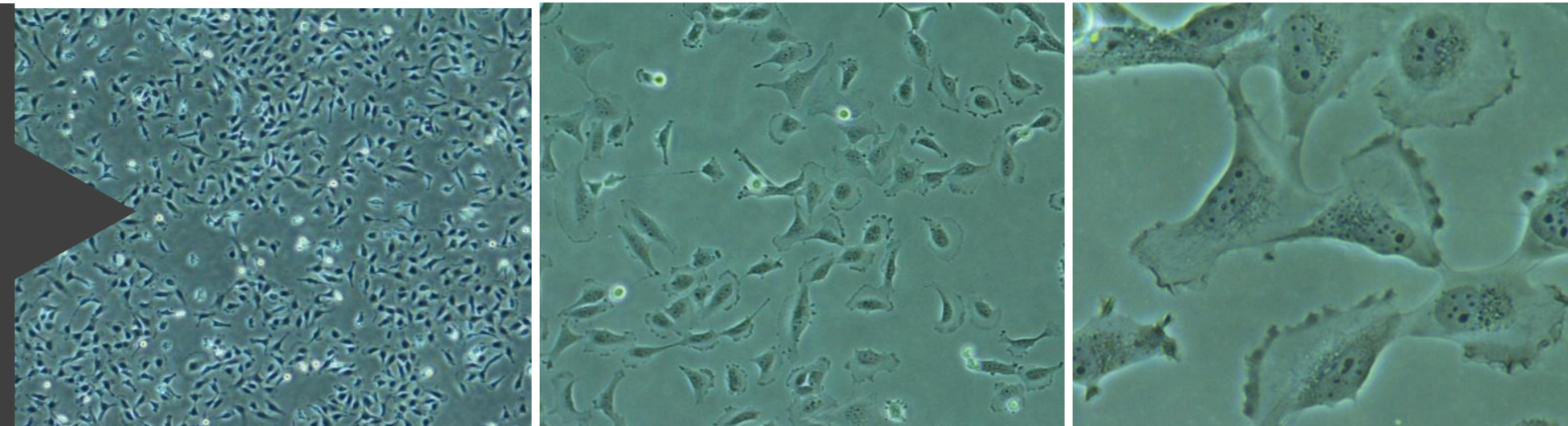
SOOTHE

Silica incOrpOraTed HydroxyapatiteE

© 2016 UTM-LY2016003397

SOOTHE: Silica Incorporated Hydroxyapatite as Bioactive Material

Biocompatible Material



Product Features

- Exploitation of agro-waste as a raw material
- Low cost production
- Biocompatible & bioactive
- Rejuvenating & repairing powdered product WITHOUT additive



INVENTOR:

Assoc Prof ChM Dr Nik Ahmad Nizam Nik Malek,
 BSc (Ind. Chem), MSc (Chem),
 PhD (Chem)(UTM),
 CChem, MRSC, MMIC

Assoc. Prof.,

Department of Biosciences,
 Faculty of Science, UTM

Fellow Researcher,

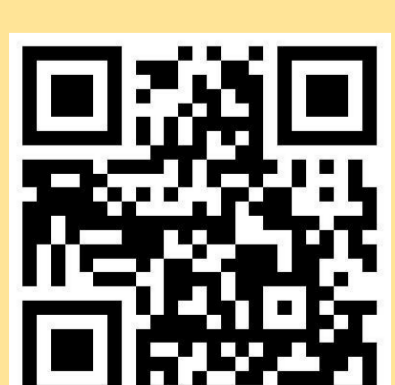
Centre for Sustainable
 Nanomaterials (CSNano),
 Ibnu Sina Institute for
 Scientific and Industrial
 Research (ISI-ISIR), UTM

+6013-7805466

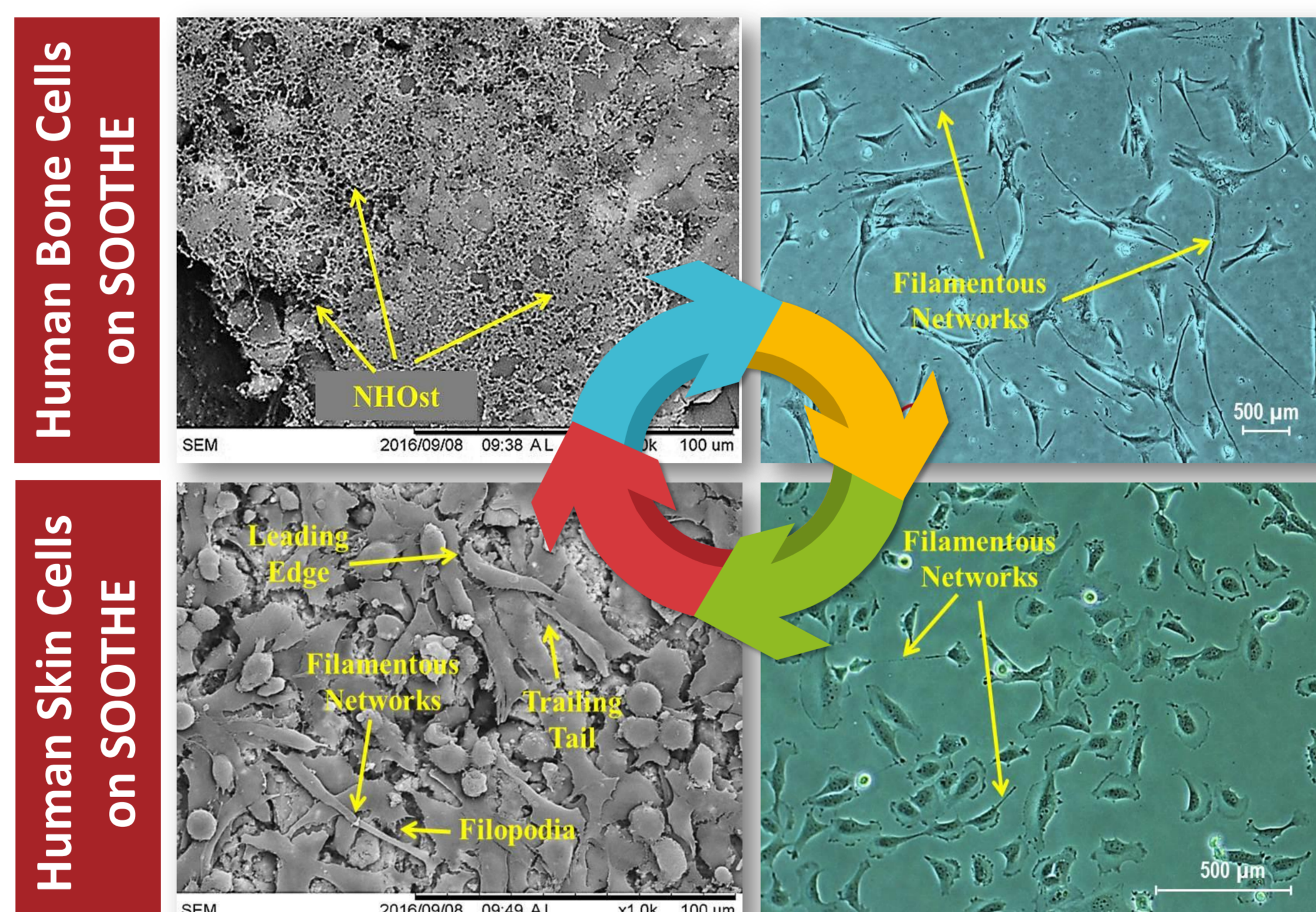
niknizam@fbb.utm.my,
 nikhizam@utm.my

ADVANTAGES

- 01 Robust to Extreme Temperature or Condition**
- 02 Compact, Portable & Convenient**
- 03 Increasing Concern on Skin Care and Beauty Routines**
- 04 8.7% Growth between 2017-2022 for Global Skin Rejuvenation Market**



Visit people.utm.my/nikhizam/ to learn more about our innovative products



SOOTHE has a potential to be new biomaterial for **wound care application** and **skin rejuvenation**

RESEARCHERS:

- Dr Nor Suriani Sani, iHumEn, Office of DVCRI, UTM
- Dr Khairunadwa Jemon, Faculty of Science, UTM
- Prof. Dato' Ir. Dr. Mohammed Rafiq Dato' Abdul Kadir, Faculty of Engineering, UTM
- Prof. Datuk Dr. Halimaton Hamdan, Razak Faculty of Technology and Informatics, UTM
- Muhammad Hariz Asraf Hassan, Faculty of Science, UTM