



**UTM**  
UNIVERSITI TEKNOLOGI MALAYSIA



**APPLE 2021**



1 – 3 November 2021

# CHALLENGES & OPPORTUNITIES IN ESTABLISHING A SUSTAINABLE COLLABORATION

Track 2: Thriving Through Collaborations (Partnership)

Experience of Universiti Teknologi Malaysia

**PROF. DR. NOR HANIZA SARMIN**  
Associate Director  
Global Strategy & Engagement (GSE)  
Universiti Teknologi Malaysia

# Outline

01

INTRODUCTION TO  
UTM

02

WHAT DEFINES A  
GREAT UNIVERSITY

03

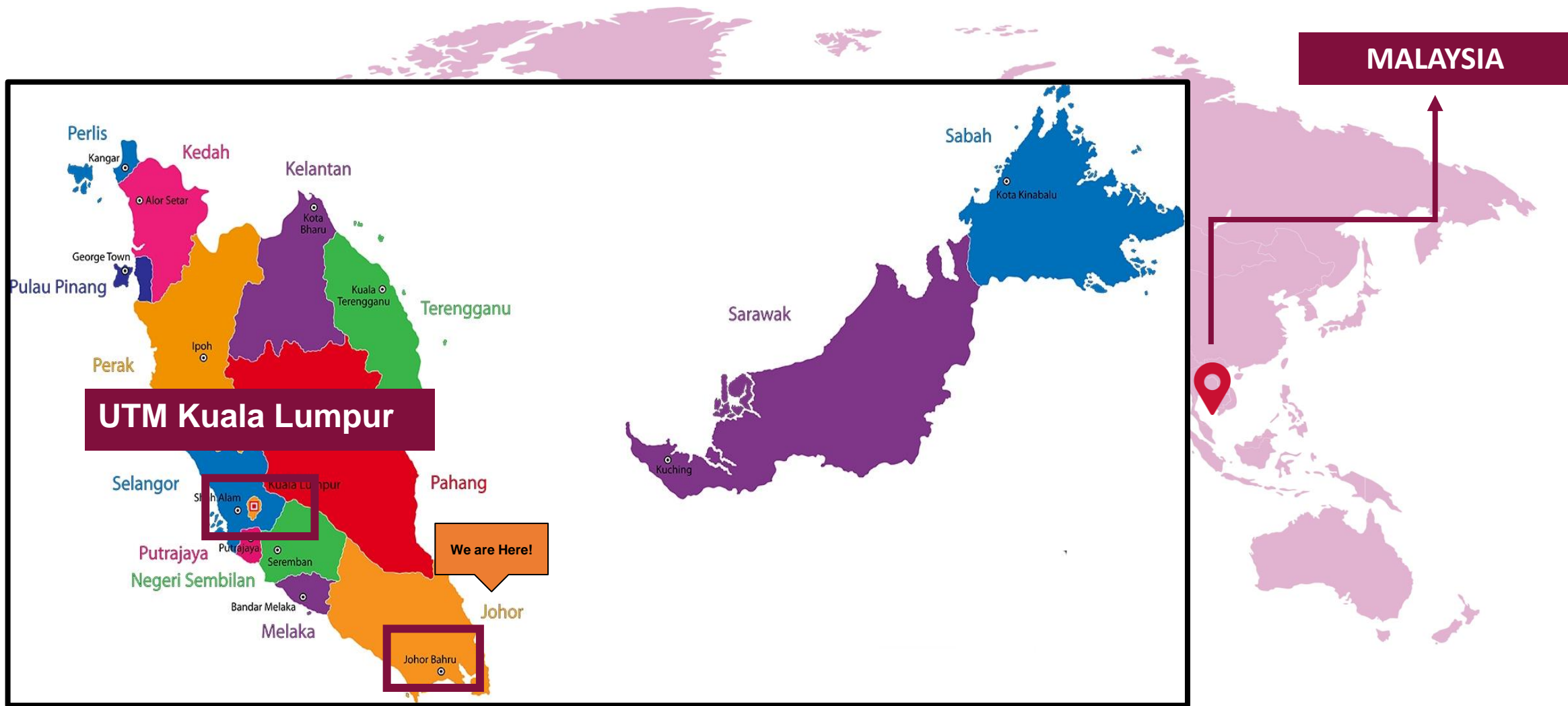
OPPORTUNITIES

04

CHALLENGES



# UTM Location



# UTM Historical Timeline



Kuala Lumpur Campus



[1985] Johor Bahru Campus  
(1,145 hectare)

Universiti Teknologi Malaysia (UTM) [1975]

**National Institute of Technology (ITK)**

**University Status [1972]**

Technical College – Professional Programmes [1960]

Technical College, Jalan Gurney [1955]

Technical College – Diploma [1946]

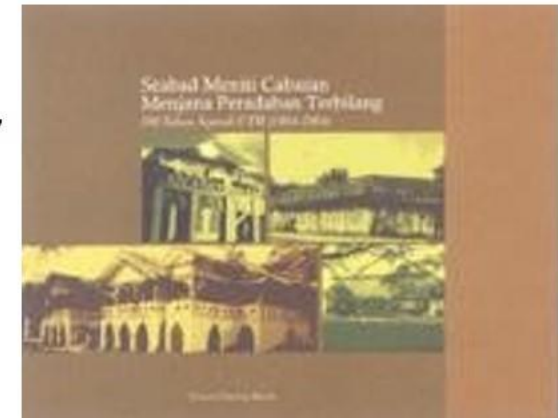
[1930] Technical School,  
High Street

[1925] Technical School,  
Jalan Brickfields --- JKR

[1906] Technical School, Batu Lane  
Bangunan Muzium, Bukit Nanas

[1904] Treacher Technical School, Weld Road  
(Jalan Raja Chulan)

**2010 – Research University**







**UTM**  
UNIVERSITI TEKNOLOGI MALAYSIA

**UTM Johor Bahru**  
(1145 hectares) – main campus





**UTM**  
UNIVERSITI TEKNOLOGI MALAYSIA

**UTM Kuala Lumpur**  
(19 hectares) – branch campus



# 7 Faculties





# Research Alliances

## 5 RESEARCH ALLIANCES

Research in UTM are built upon our conventional strength in engineering while exploring other emerging fields.

Resource  
Sustainability

Frontier Material

Smart Digital  
Community

Health and  
Wellness

Innovative  
Engineering

### 4 HIGHER INSTITUTION CENTRE OF EXCELLENCE (HICoE)

UTM have four HICoEs in  
Malaysia

### 6 CENTER OF EXCELLENCE (CoE)

Each our centres of  
excellence have more  
specific

### 170 RESEARCH GROUP

The smaller nucleus of our  
research entries where we  
encourage working in either  
single discipline or multi  
discipline group

### 6 RESEARCH CENTER

26 research centres in UTM

### 6 RESEARCH INSTITUTE

One of the success stories  
of UTM where we group  
together reserach centres  
with similar focus areas





# UTM in Brief

**3**

Campuses

**7**

Faculties

**1,645**

Academic Staff

**24,704**

Students

**15,526**

UG Students

**9,178**

PG Students

**4,912**

International  
Students

**3,973**

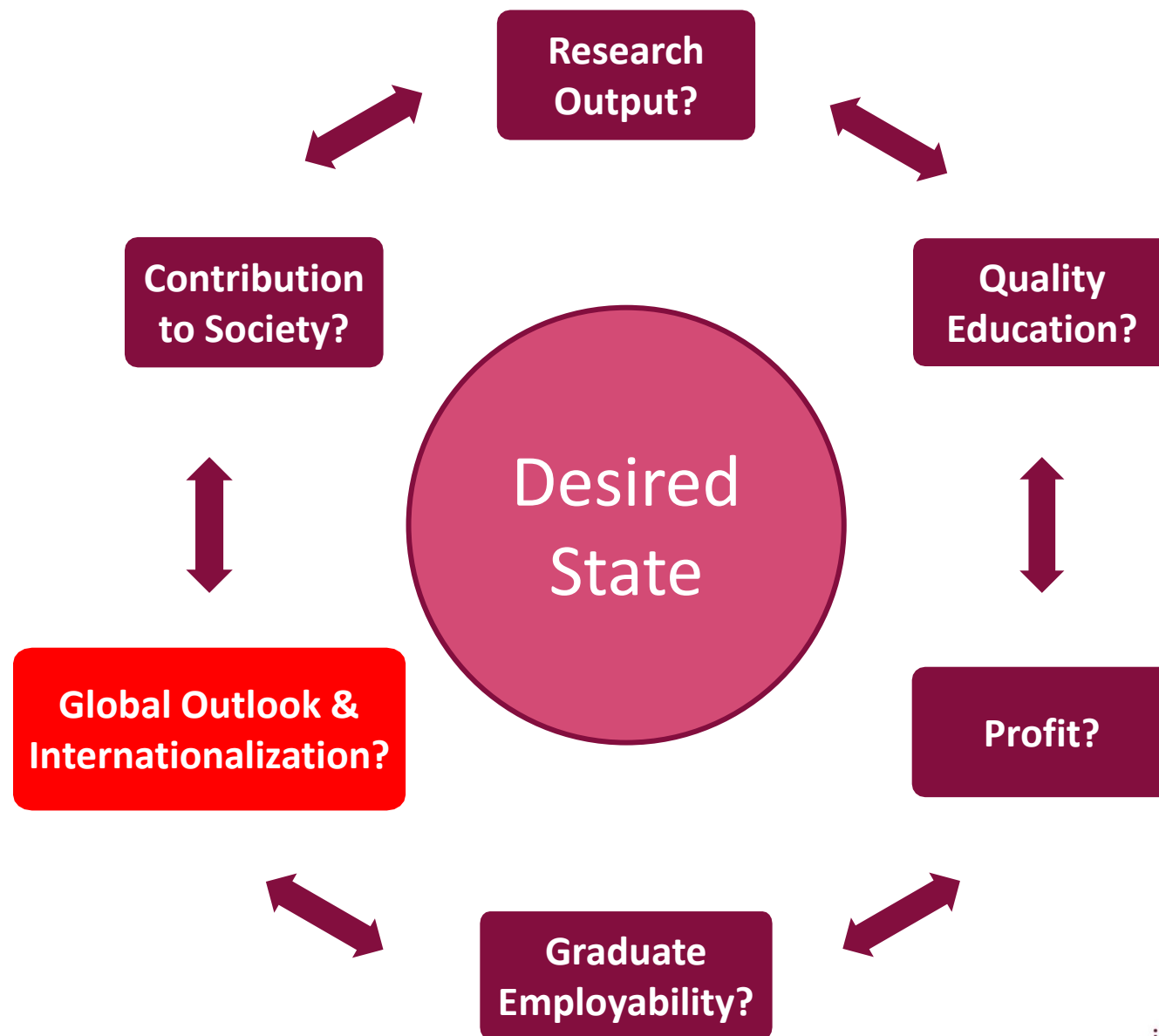
Total Inbound

**4,608**

Total Outbond



# What defines a 'GREAT' university?





# Why Internationalisation is one of the Performance Indicators?



## Branding

- Increase global visibility
- Marketing
- Ranking
- Academic Reputation
- Alumni



## Institutional Strength

- University Missions
- Develop stronger research
- Financial Sustainability
- Strategic Partnership



## Education

- Quality teaching
- Provide the most relevant education to students
- Quality graduate attributes with global outlook





# STRATEGIC PARTNERSHIP IN ACADEMIC, RESEARCH & INNOVATION

innovative • entrepreneurial • global



## MODEL 1

**Bi-lateral agreements  
focusing on academic &  
research cooperation**

*Faculty/institutional level  
cooperation & academic  
exchange*

## MODEL 2

**Global research/  
academic network of  
universities on niche focus  
areas**

*Support, strengthen and  
facilitate individual institutions  
in research; build “primary  
partnerships” in selected  
regions with a focus in specific  
disciplines*

## MODEL 3

**Strategic international  
collaboration with reputable  
universities**

*To expand reach globally  
through reputable partner  
institution’s network of  
collaboration and expertise*

*To leverage on partner’s global  
ranking/position*

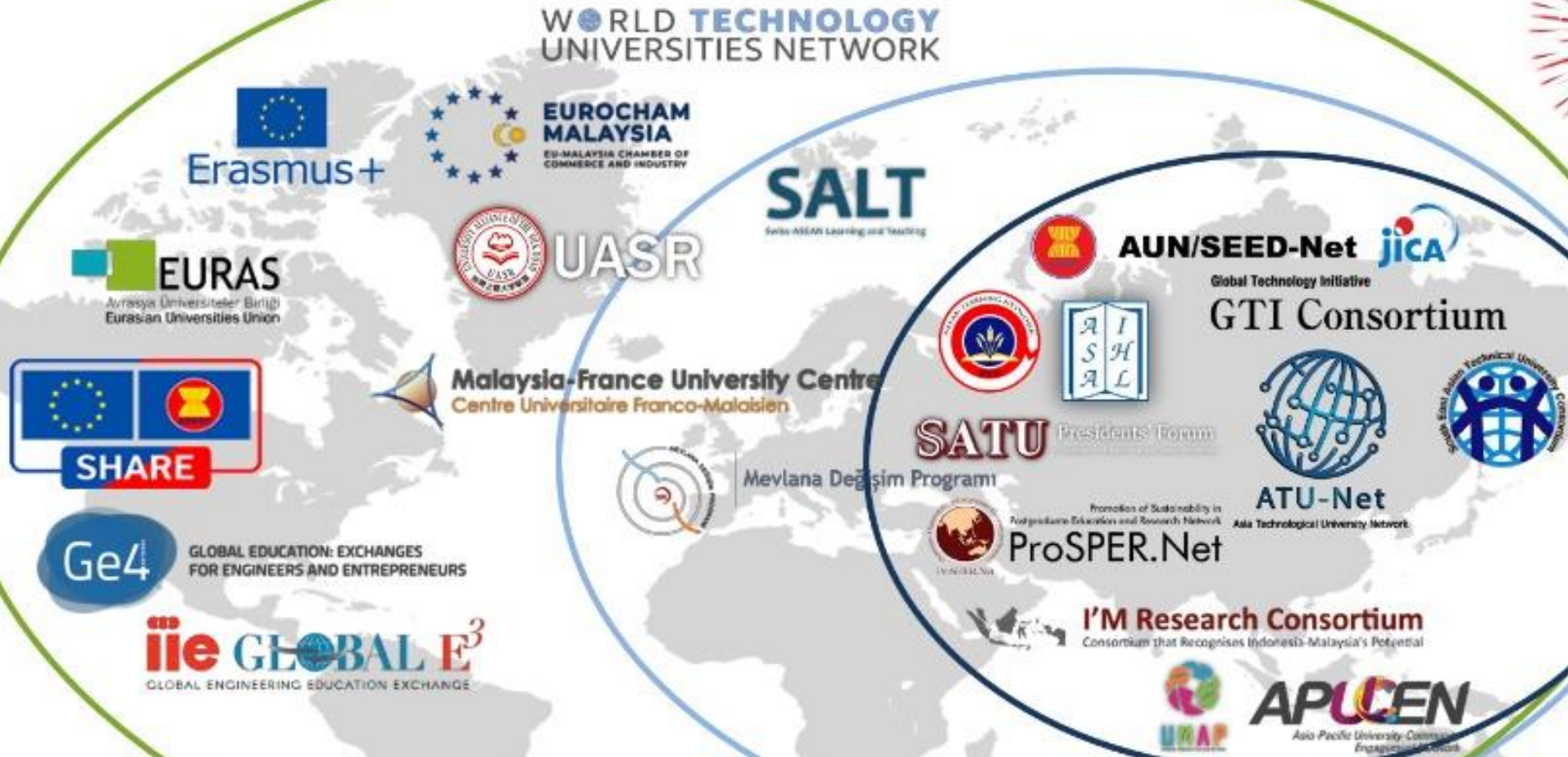






# UTM Global Alliances in Niche Area (Multi-lateral Partnerships)

23



*\*New*  
ASEAN Business School Connections



대한언어학회 전자저널

innovative • entrepreneurial • global



# UTM Mobility Mobility Program via Alliances



**ATU-Net**

Asia Technological University Network

**JUC**



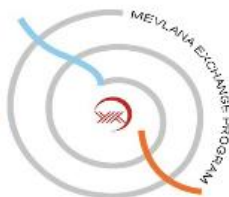
**Erasmus+**



**600++  
students**



**MEVLANA  
EXCHANGE  
PROGRAM**



# Model 3: Strategic collaboration with Top Global Universities\*



**#1**



**#2**



**#3**



**#7**



**#12**



**#17**



**#23**



**#36**



**#33**



**#41**



**#53**



**#75**



**#68**



**#82**



**#90**



**#77**



**#92**



**#116**

\*QS-WUR 2021  
updated 23 June 2021  
innovative • entrepreneurial • global





# Model 3: Impactful Strategic Global Collaboration



- **MIT-UTM** Malaysia Sustainable Cities Program (MSCP)
- ✓ MSCP research examines Malaysia's city planning and development that reflect a commitment to the principles of sustainability



- UTM Centre for Low Carbon Transport Research in Cooperation with Imperial College London
- Research & Development in Sustainable transportation & energy



- Development of methodology for Low Carbon Society (LCS) scenarios in city and local context
- Other partners: JICA, Kyoto University (KU), Okayama University (OU), National Institute for Environmental Studies (NIES)



- UTM Centre for Industrial and Applied Mathematics
- Collaboration in Industrial and Applied Mathematics
- UTM satellite office in University of Oxford

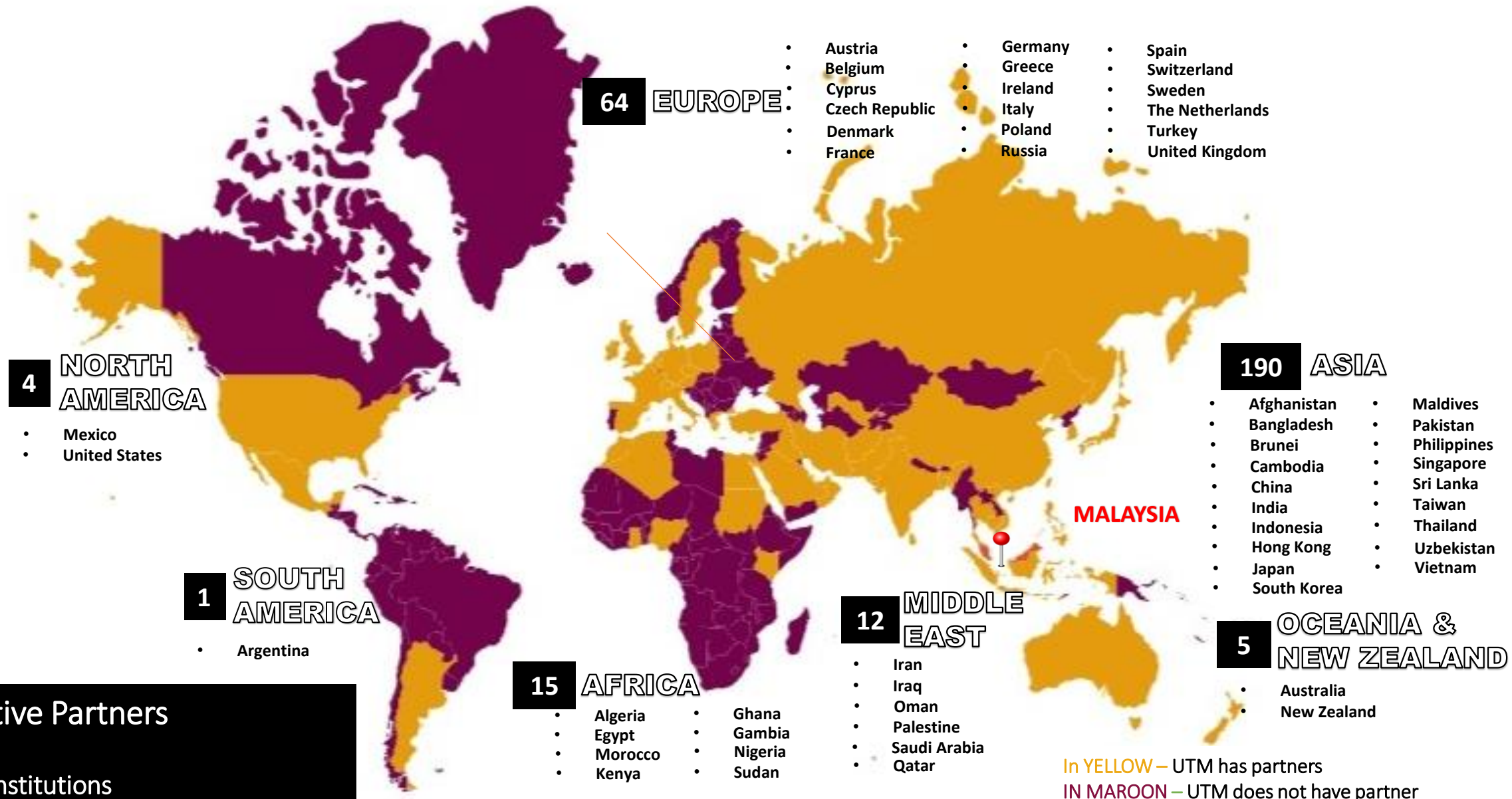


ALMA MATER STUDIORUM  
UNIVERSITA DI BOLOGNA

- University of Bologna is the oldest university in the western world



# UTM International Bilateral Partners (Active as of June 2021)

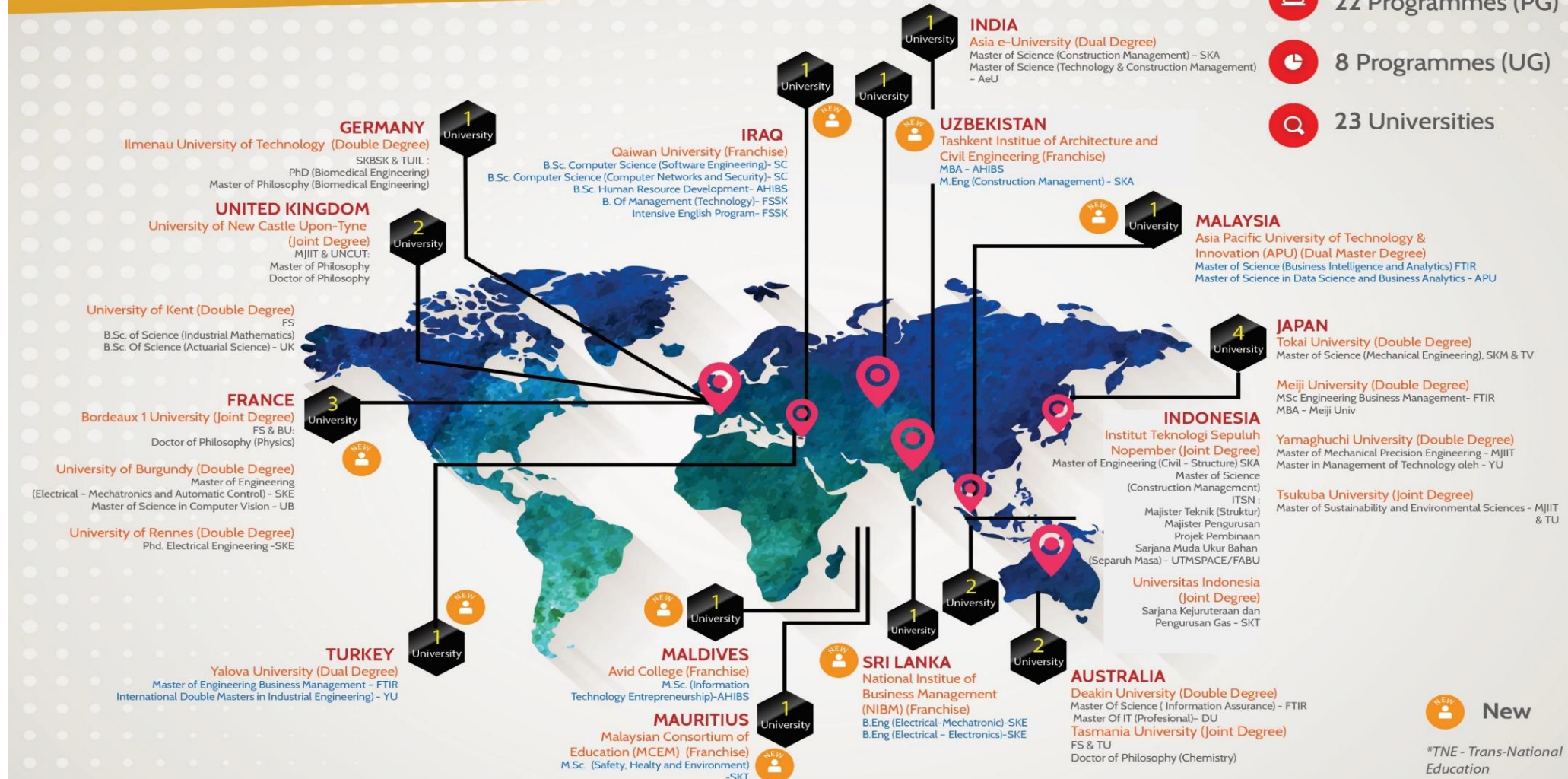




# UTM Transnational Education (TNE)

## UTM TNE Partnerships 2018

- 14 Countries
- 22 Programmes (PG)
- 8 Programmes (UG)
- 23 Universities



Expand reach globally through  
reputable partner institution's  
network of collaboration and expertise

1

Leverage on partner's global  
ranking/position

2

Get partner from specific and niche area

3

Staff exchange

4

Student mobility

5

Academic collaboration

6

Joint research

7

Ranking

8

OPPORTUNITIES





# Covid – 19 in Malaysia

## CURRENT SITUATION as of 20 October 2021

2,361,529 2,227,889 27,191

Confirmed

▲ 7950

Recovered

▲ 10832

Deaths

0

106,047

770

419

In Treatment

▼ -2883

ICU

0

Ventilator\*

0



**1<sup>st</sup> Case:**  
25 January 2020

as of 18 October 2021

### Vaccination overview

From [Our World in Data](#) · Last updated: 2 days ago



Malaysia

Doses given

48M

Fully vaccinated

22.9M

% of population fully vaccinated

70.9%


50 YEARS OF SHAPING THE NATION TOGETHER

[StarPlus](#)
[News](#)
[Asean+](#)
[Business](#)
[Sport](#)
[Metro](#)
[Lifestyle](#)
[Food](#)
[Tech](#)
[Education](#)
[Opinion](#)
[Video](#)

[TOPICS](#)
[Flame on Olympics](#)
[Sabah & Sarawak](#)
[The New Normal](#)
[In 500 Words](#)
[Covid-19 Watch](#)
[EEA 2021](#)

### Covid-19: Another record high of 17,786 cases on Saturday (July 31)

[f](#)
[t](#)
[s](#)
[v](#)
[in](#)
[p](#)
[e](#)
[m](#)

**NATION** 4P

Saturday, 31 Jul 2021  
3:49 PM MYT

**Related News**

**NATION** 7h ago  
Covid-19: Perak expected to see a surge in cases in coming...

**NATION** 20h ago  
Covid-19: 165 fatalities bring death toll to 9,024

**COVID-19**  
NUMBERS IN MALAYSIA: JULY 31, 2021

| VACCINATED IN MALAYSIA (as at 11:59pm July 30) |           | TOTAL DOSE 1 & DOSE 2 | DOSE 1 TOTAL | DOSE 2 TOTAL |
|--|-----------|-----------------------|--------------|--------------|
| 17,786   | 1,113,272 | 11,718                | 165          |              |
| NEW CASES                                      |           | TOTAL CASES           | RECOVERIES   | DEATHS       |
| 1,144  | 1,389     | 580                   | 1,962        | 9            |
| 713  | 775       | 16                    | 1,035        | 485          |
|  |           |                       |              | 6,400        |
|  |           |                       |              | 883          |

*TheStar.com.my*

PUTRAJAYA: Malaysia recorded another record high of 17,786 new Covid-19 cases on Saturday (July 31), the Health Ministry has confirmed.



# THANK YOU



<https://people.utm.my/nizararmin/>



nhs@utm.my



Niza Sarmin



Niza Sarmin



NOR HANIZA SARMIN



**UTM**  
UNIVERSITI TEKNOLOGI MALAYSIA

In the name of God for Mankind

[www.utm.my](http://www.utm.my)

Photo credit: Thuy Van Nguyen

Credit slides: Nur Shafikah Misran